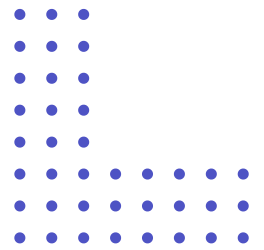


TITIAN MAJU BERSAMA



# 2024 BUSINESS COMPANY PROFILE

---



+62-81373-050852  
[www.titian.co.id](http://www.titian.co.id)  
Garden Loft CE.2 No.29  
Grand Wisata, Kab. Bekasi  
17510



TITIAN MAJU BERSAMA

# Table Of Contents

**Welcome Message** 03

**Company Milestone** 04

**Our Business** 05

**Project Experiences** 08

**Our Products** 12

**Meet our Team** 16

**Our Clients** 17

**Contact Information** 18

TITIAN MAJU BERSAMA

# Welcome Message

Dear Visitors,

Welcome to our humble company. As simple as a footbridge but so efficient in delivering our common goal.

At TITIAN, we believe that togetherness is the foundation of our success. We are committed to fostering a collaborative environment where creativity thrive. By working hand-in-hand with our clients and partners, we aim to build meaningful relationships that lead to extraordinary results.

Together, we can achieve great things!

**Together to be Brilliant!**

Thank you for entrusting your needs to us.

Warm regards,  
CAHYO PRASETYO  
Director



TITIAN MAJU BERSAMA

# Company Milestone



2022

Starting from the need's to solve various measurement problems in the oil and gas industry in Indonesia, the founder's had the same desire to solve these, so they founded the company to realize their goals.

On June 8th, 2022 **PT. Titian Maju Bersama** was founded based on notarial deed and decree of Indonesian Ministry of Law and Human Rights number AHU-0037868.AH.01.01.TAHUN 2022.

2024

Now in 2024 TITIAN was able to survive and develop very well beyond expectations. Not only Oil & Gas Industries, TITIAN also trying to develop capabilities to meet needs in other industrial fields such as mining, manufacture and others.

In February 2024, TITIAN was move to our new office and workshop at Garden Loft CE.02 No.29, Grand Wisata, Kecamatan Tambun Selatan, Kabupaten Bekasi, Jawa Barat 17510.

[www.titian.co.id](http://www.titian.co.id)

TITIAN MAJU BERSAMA

# Our Business

## Custody Metering

We have successfully implemented oil and gas custody metering systems for various clients, ensuring accurate measurement and accountability.

Our experience in Metering Inspections and assessment, Metering Calibration and Metering Integration.

Our expertise in flow computer with several International and American standard configuration.



## PLC, HMI, FC, IoT

Our team of experts specializes in system integration, seamlessly connecting different components and technologies to create efficient and cohesive systems.

We have experience in integrating various systems, including HMI, PLC systems and IoT.

We offer customized HMI solutions that provide intuitive and user-friendly interfaces for controlling and monitoring industrial processes.





TITIAN MAJU BERSAMA

# Our Business

## Expert Services

In addition to our core specializations, we offer expert services in engineering and system design. Our team of professionals is dedicated to delivering high-quality solutions and providing exceptional customer support.



## O&M Services

We have competent personnel to support your business operational and maintenance.



## Training

We are capable to provide any training to improve competencies especially in Oil & Gas and industrial control systems such as PLC, HMI, Instrumentation and Metering Systems.



TITIAN MAJU BERSAMA

# Our Business

## Trading

We are also do retail to meet industrial demand. We are selling industrial needs such as software, field instrument, automation device, safety equipment and etc.



## Product Development

We are also improve and developing new products to meet any industrial need and future challenges such as Industry 4.0, Analytic software, Predictive Maintenance, Overall Equipment Effectiveness and Smart Manufacturing. It is become our confidence and advantage to always solving any client's problems.



TITIAN MAJU BERSAMA

# Project Experiences

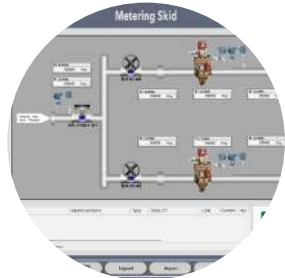
## ✓ Weather Monitoring System

End User : PT. Vale Indonesia Tbk.  
Customer : PT. Vale Indonesia Tbk.  
Scope : Procurement & System Integration  
Year : 2024  
Location : Sorowako, Sulawesi Selatan



## ✓ Orifice Metering Package (MRS)

End User : PT. Likuid Nusantara Gas  
Customer : PT. Maxco Andalan Solusi  
Scope : Procurement & System Integration  
Year : 2024  
Location : Pasuruan, Jawa Timur



## ✓ Maintenance Metering System

End User : PT. Nusantara Regas  
Customer : PT. Tekno Utama Empat Sekawan  
Scope : Manpower Supply  
Year : 2023 - present  
Location : Jakarta Utara



## ✓ Long Term Service Agreement Metering System at JOB Pertamina - Medco E&P Tomori Sulawesi

End User : JOB Pertamina - Medco E&P Tomori Sulawesi  
Customer : PT. Catur Elang Perkasa  
PT. Multi Kreasi Engineering  
Scope : Corrective Maintenance, Calibration  
Preventive Maintenance, Material Supply  
Year : 2021 - 2023  
Location : Sulawesi Tengah





TITIAN MAJU BERSAMA

# Project Experiences



## Gas Ultrasonic Meter (USM) Wet Calibration Grissik Metering System

End User : Medco E&P Grissik Ltd.  
Customer : PT. Control System Arena Para Nusa  
Scope : Integration USM Daniel to FC OMNI6000  
Year : 2022  
Location : Grissik, Sumatera Selatan



## Gas Ultrasonic Meter (USM) Wet Calibration Betara Gas Plant

End User : PetroChina International Jabung Ltd.  
Customer : PT. Maharaja Aditama Sakti  
Scope : Engineering, Training, SAT and  
Commissioning of USM Metering System  
Year : 2023  
Location : Jambi, Indonesia



## Improvement Ultrasonic Metering System at ORF Tambak Lorok

End User : PT. Kalimantan Jawa Gas  
Customer : PT. PGAS Solution  
Scope : Improvement HMI, Flow Computer, Network  
Year : 2022  
Location : Semarang, Indonesia



## Jasa Perancangan, Pengadaan dan Konstruksi Pembangunan Pipa Gas Senipah-Balikpapan

End User : PT. Pertamina Gas  
Customer : PT. PGAS Solution / PT. Pratiwi Putri Sulung  
Scope : Ultrasonic Gas Metering Integration  
Year : 2023  
Location : Senipah - Balikpapan



TITIAN MAJU BERSAMA

# Project Experiences



## USM Metering & Regulating System EPC Gas Supply Facilities to IKPP - Perawang Project

End User : PT. Energasindo Heksa Karya  
Customer : PT. Pratiwi Putri Sulung  
Scope : Ultrasonic Gas Metering Integration  
Year : 2023  
Location : Perawang, Riau



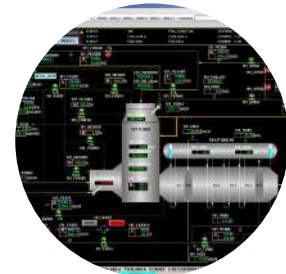
## Alternative Fuel Feeder

End User : PT. Semen Padang  
Customer : PT. Pamulang Teknologi  
Scope : Local Control Panel, PLC M221, HMI ET6  
Year : 2023  
Location : Sumatera Barat



## Penambahan Satu Unit Force Draft Fan Pada Co Boiler 101F503 RFCC

End User : PT. KPI RU IV - Cilacap  
Customer : PT. Pratiwi Putri Sulung  
Scope : Programing DCS Honeywell & PLC Siemens  
Year : 2023 - 2024  
Location : Cilacap, Jawa Tengah



## Gas Ultrasonic Meter (USM) Wet Calibration System Meter Arun & System Meter Belawan

End User : PT. Pertamina Gas  
Customer : PT. Rexaudia Sasada Sentosa  
Scope : Integration USM Krohne to Floboss S600+  
Year : 2023  
Location : Arun, Aceh & Belawan, Sumatera Utara



TITIAN MAJU BERSAMA

# Project Experiences



## Annual Recertification Meter Gas Meter Orifice, Maleo Platform

End User : Medco Energi E&P East Java  
Customer : PT. Spektra Smartindo  
Scope : Calibration MGO  
Year : 2023  
Location : Maleo Platform



## Annual Recertification Meter Gas Ultrasonic, Grissik

End User : Medco E&P Grissik Ltd.  
Customer : PT. Spektra Smartindo  
Scope : Calibration USM Metering System  
Year : 2023  
Location : Grissik, Sumatera Selatan



## Remote Weather Monitoring System

End User : PT. Vale Indonesia  
Customer : PT. Kesindo  
Scope : Supply and Commissioning Controller Unit  
Year : 2023  
Location : Sorowako, Sulawesi Selatan



## Tin Smelter - Electric Furnace

End User : PT. Mitra Stania Prima  
Customer : -  
Scope : Control System (PLC & SCADA)  
Year : 2023  
Location : Sungai Liat, Bangka



TITIAN MAJU BERSAMA

# Our Products Analyzers

✓ H2O Analyzer \*)



## AMI Model 4010LX

Full-featured TDLAS Moisture Analyzer for critical H2O measurements in gas streams

Response Times : < 2 sec

Repeatability :  $\pm 0.25$  lbs ( $\pm 5.25$  ppm)

Accuracy :  $\pm 0.25$  lbs ( $\pm 5.25$  ppm)

\*) in colaboration with **MAXCO**

TITIAN MAJU BERSAMA

# Our Products Analyzers

✓ H2S Analyzer \*)



## AMI Model 3010BX

### DEPENDABLE H2S MEASUREMENTS MADE INCREDIBLY EASY

The MODEL 3010BX is AMI's neXt generation Trace H2S Analyzer. Its patented technologies and superior design make the Analyzer the top pick among engineers and measurement technicians seeking reliable and accurate H2S measurements under harsh conditions.

Response Times : <120 sec

Repeatability :  $\pm 1\%$  of range or  $\pm 0.2$  ppm of H2S, whichever is greater

Accuracy :  $\pm 1.5\%$  of full scale range at constant conditions

\*) in colaboration with



[www.titian.co.id](http://www.titian.co.id)



TITIAN MAJU BERSAMA

# Our Products

## ✓ Smart Power Management Controller



Real Time Monitoring Mode			
No.	Upper	Lower	
1	MCN_ITEM_SELECT	Select:Up / Down	Item Select Screen
2	EQP_Main_Status	Status:Key OFF	Main Status
3	Battery Voltage	Normal 26.80 V	Battery Status + Physical Voltage
4	IP:FromKeySwitch	BR:1 ACC:1 C:1	Input conditions of BR/ACC/C (1: ON, 0: OFF)
5	IP:C_SigFeedback	OFF	Status of C signal feedback (ON / OFF)
6	IP:FireSuppression	Closed/NonActive	Status of Fire Suppression (Close/Open)
7	IP:SwitchPowerSource	xx.xxV NonActive	Voltage/Status of Switch Source Power
8	IP:FOG/FWD/ROTRV	FOG:1 FWD:1 RO:1	Input conditions of FOG/FWD/ROTARY (1: ON, 0: OFF)
9	IP:Overtaking	OFF	Status of Overtaking Switch Input (ON / OFF)
10	IP:FatigueWarnan	S:XXXX,XXXXs OFF	S:Remain Time, D:Division Time, Switch Status
11	IP:SwitchOption	Opt:OFF Op2:OFF	Input conditions of Option1, Option2 switch (ON/C)
12	IP:Switch Spare	S1:1, S2:1, S3:1	Input conditions of spare1/2/3 (1: ON, 0: OFF)
13	IP:Parking/Revrs	Park:OFF Rev:OFF	Input condition of Parking / Reverse (ON/OFF)
14	IP:EMGS PowerSource	xx.xxV NonActive	Voltage/Status of Emergency Switch Source Power
15	IP:EMG SwitchCAS	NC:CLOS, NO:OPEN	Input condition of Emergency switch inside CAB
16	IP:EMG SwitchGUT	NC:CLOS, NO:OPEN	Input condition of Emergency switch outside
17	OP:IdleTimer LED	ST:OFF FB:XX.XXA	Output condition status / Feedback current of Idle
18	OP:FatigueW BUZR	ST:OFF FB:XX.XXA	Output condition status / Feedback current of Fatigue
19	OP:To EQP BR	ST:OFF FB:XX.XXA	Output condition status / Feedback current of BR
20	OP:To EQP ACC	ST:OFF FB:XX.XXA	Output condition status / Feedback current of ACC
21	OP:To EQP C	ST:OFF FB:XX.XXA	Output condition status / Feedback current of C/D
22	OP:FOG Lamp	ST:OFF FB:XX.XXA	Output condition status / Feedback current of FOG
23	OP:FWD Lamp	ST:OFF FB:XX.XXA	Output condition status / Feedback current of FWD
24	OP:Rotary Lamp	ST:OFF FB:XX.XXA	Output condition status / Feedback current of ROTARY

Smart Power Management Controller (SPMC) is designed to optimize power distribution and consumption in Dump Truck Fleet. These controllers help improve efficiency, extend battery life, and manage power supply to various components. Here are some key features and functions of a SPMC:

- Voltage Regulation
- Battery Management
- Load Sharing
- Sleep Mode Management
- Integrated Protection Features
- Communication Interfaces

TITIAN MAJU BERSAMA

# Our Products

## ✓ Weather Monitoring System



The combination of Rika Sensors' sophistication and our ability to design systems and produce innovations so that they can be applied in any field and compatible to various platforms and technologies such as Videotron Display, IoT to Cloud Computing which is possible to support of Big Data and Machine Learning.

TITIAN MAJU BERSAMA

# Meet Our Team





TITIAN MAJU BERSAMA

# Our Clients



VALE

**pgn** SOLUTION  
*action for excellence*



Control Systems



CATUR ELANG



**PT. HANANG GEMA INSTRUMENT**  
*Expert in Process Control And Instrumentation*



PT TITIAN MAJU BERSAMA

[www.titian.co.id](http://www.titian.co.id)



**Phone Number**  
+62-81373-050-852



**Website**  
[www.titian.co.id](http://www.titian.co.id)



**Email**  
[sales@titian.co.id](mailto:sales@titian.co.id)



**Address**  
Grand Wisata  
Komplek Ruko Garden loft, No.29 Blok CE02  
Tambun Selatan, Kabupaten Bekasi  
Jawa Barat 17510